

Henry Williams Ltd.
Darlington
Co. Durham
DL1 2NJ
(01325) 462 722
www.hwilliams.co.uk



Flat Pack Location Case(s)

Operation & Maintenance Manual

Document Ref: FLAT PACK HWLOCATION-CASE: Version 4.0



Issue and Revision Record

Rev	Date	Originator (Print) (Signature)	Checker (Print) (Signature)	Description
1.0	07/12/22	S Ward		Version 1
2.0	24/01/23	S Ward	C Stephenson	Version 2
3.0	26/01/23	S Ward	C Stephenson	Version 3
4.0	23/03/23	S Ward	C Stephenson	Version 4

List of Contents

Chapters and Appendices

Table of Figures	4
1 Introduction	5
1.1 Competencies and Training Requirements	5
1.2 Glossary of Terms and Abbreviations	5
1.3 Drawing References – Location Cases	5
2 Safety	6
2.1 Lifting & Trapping	6
2.2 Disposal of Location Case	6
3 Details of the Location Cases	7
3.1 General Information	7
3.2 A-Type Location Case General Arrangement (External)	7
3.3 A-Type Location Case General Arrangement (Internal)	8
3.4 B-Type Location Case General Arrangement (External)	9
3.5 B-Type Location Case General Arrangement (Internal)	10
4 Location Case Installation	11
4.1 Installation of A-Type Location Case to Base	11
4.2 Installation of B-Type Location Case to Base	12
5 Maintenance	13
5.1 Replacement of Components	13
5.2 Annual Procedure	13
5.3 Lemur Products	13
5.4 Guarantee	13
6 Location Case Part Numbers	14
7 Case Assembly Guide	15
Appendix A – Large Case (A – Full Width)	
Appendix B – Small Case (B – Half Width)	

Table of Figures

Figure 1: A-Type Location Case (Large) External Arrangement	7
Figure 2: A-Type Location Case (Large) Internal Arrangement	8
Figure 3: A-Type Location Case (Large) Uni-Strut Positions	8
Figure 4: B-Type Location Case (Small) External Arrangement	9
Figure 5: B-Type Location Case (Small) Internal Arrangement	10
Figure 6: B-Type Location Case (Small) Uni-Strut Positions	10
Figure 7: Large Case fitting to Base Detail	11
Figure 8: Small Case fitting to Base Detail	12

1 Introduction

This document is designed for use by the maintenance staff (technicians and their supervisors) to maintain the Location Case.

After safety issues are discussed in Chapter 2 this manual follows a logical path from description of the relevant components and routine maintenance.

- **Chapter 2: Safety**
Gives details of any relevant safety issues to be observed in the use and disposal of the equipment.
- **Chapter 3: Maintenance**
Details the recommended maintenance checks required to ensure the ongoing correct operation of the system.
- **Chapter 4: Part Numbers**
Lists the main parts of the system complete with Supplier and Part numbers to aid in the re-ordering of spare parts. – Individual item numbers available on request

1.1 Competencies and Training Requirements

Staff with the responsibility for installation and maintenance of the location case must hold the required Network Rail licenses.

1.2 Glossary of Terms and Abbreviations

HWL	Henry Williams Limited
Loc	Location/Location Case/Trackside Enclosure
mm	millimetres
REB	Relocatable Equipment Building

1.3 Drawing References – Location Cases

The drawing for each Location Case is available on request.

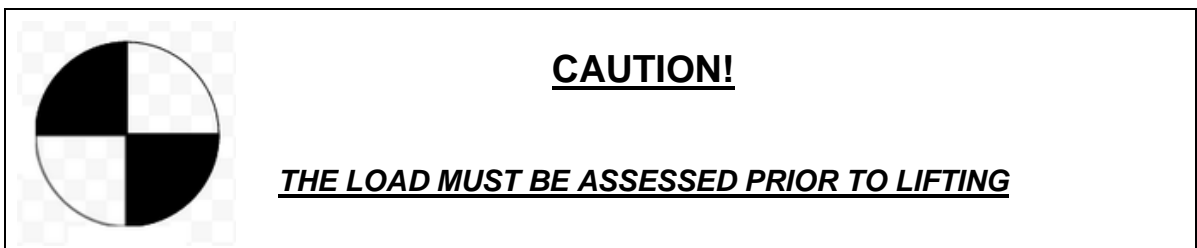
2 Safety

2.1 Lifting & Trapping

The location case is fitted with external lifting eyes, both of these should be used when lifting, along with suitable lifting equipment. As per the regulations, the load should be assessed prior to any lifting being carried out and lifted uniformly.

Each of the location case enclosures is designed with lifting eyes on each side. These have been independently tested with a load weight of 1,000Kg. According to LOLER regulations @ 200% this gives a SWL of 500Kg.

Empty case weights can be found in Part Numbers table.



The Manual Handling Regulations should be considered when lifting heavy items.

All enclosures are fitted with metal hooked door stays which should be used to prevent accidents or damage due to wind or other unforeseen circumstances from closing the doors on unsuspecting personnel.

2.2 Disposal of Location Case

Due consideration must be given when disposing of equipment.

Environmental regulations and standards are continually being updated and therefore a risk assessment must be undertaken at the time of equipment disposal.

3 Details of the Location Cases

3.1 General Information

The images below show the general layouts of the Location Cases.

3.2 A-Type Location Case General Arrangement (External)

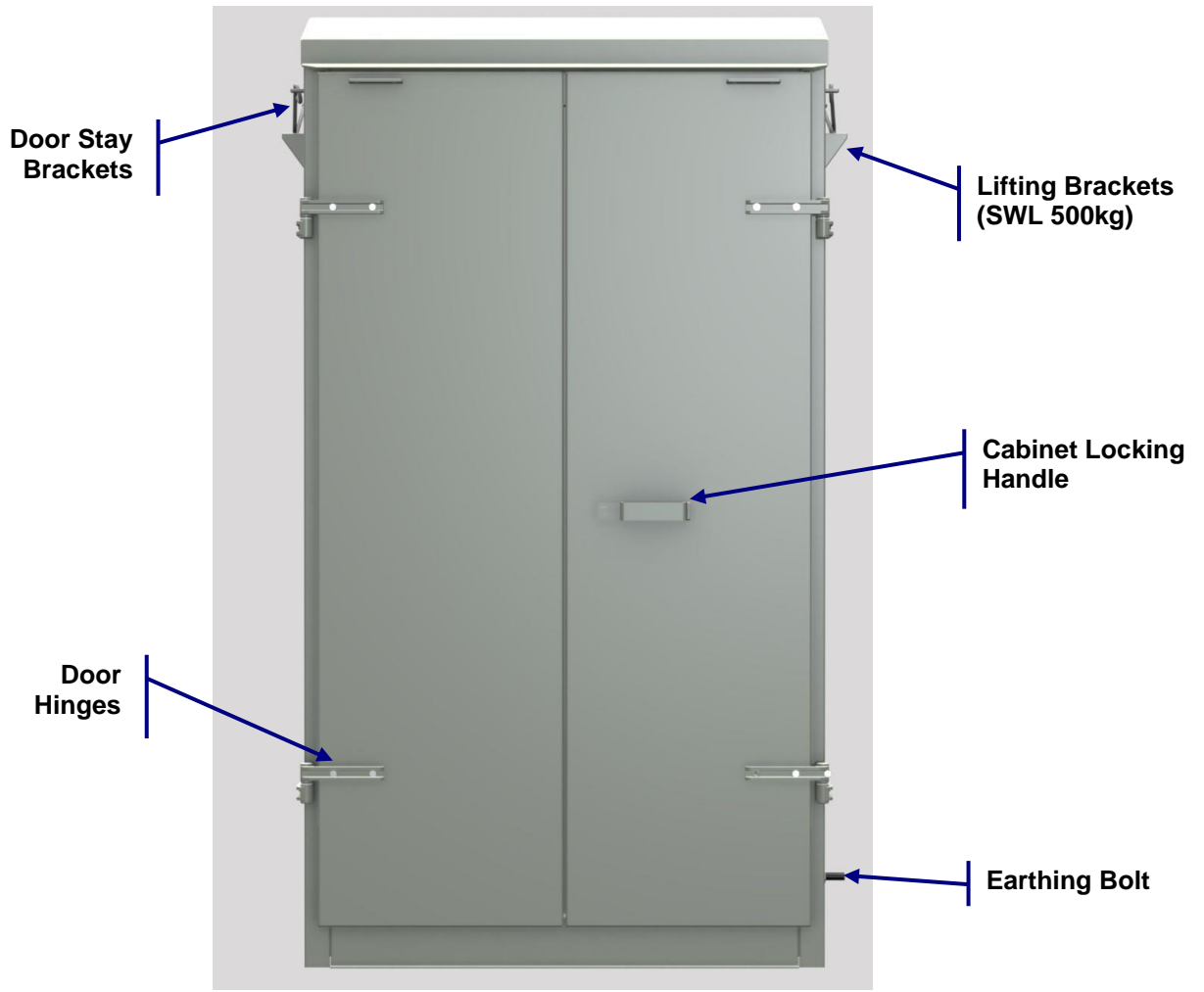


Figure 1: A-Type Location Case (Large) External Arrangement

3.3 A-Type Location Case General Arrangement (Internal)

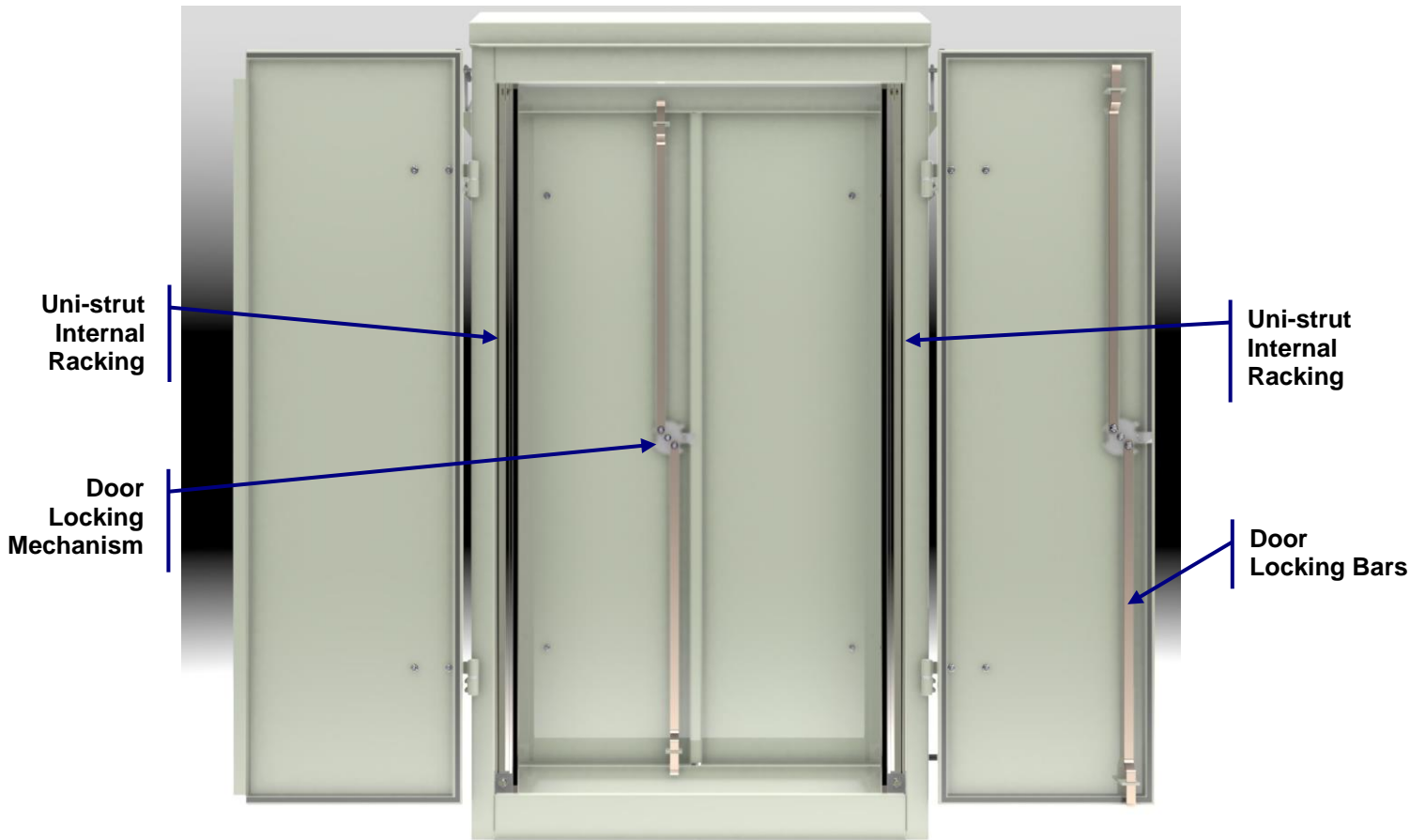


Figure 2: A-Type Location Case (Large) Internal Arrangement

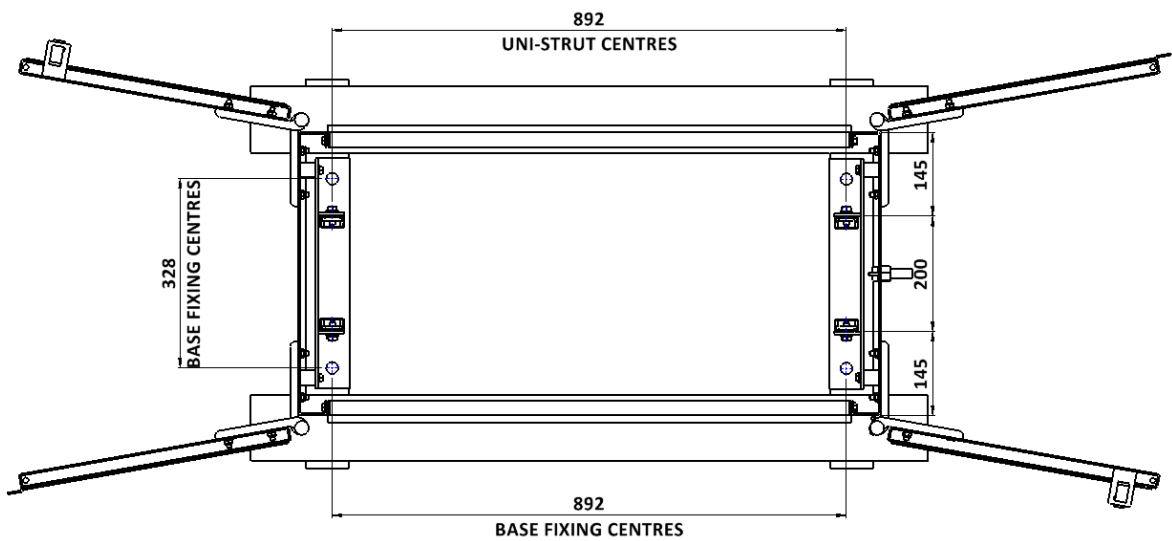


Figure 3: A-Type Location Case (Large) Uni-Strut Positions

3.4 B-Type Location Case General Arrangement (External)

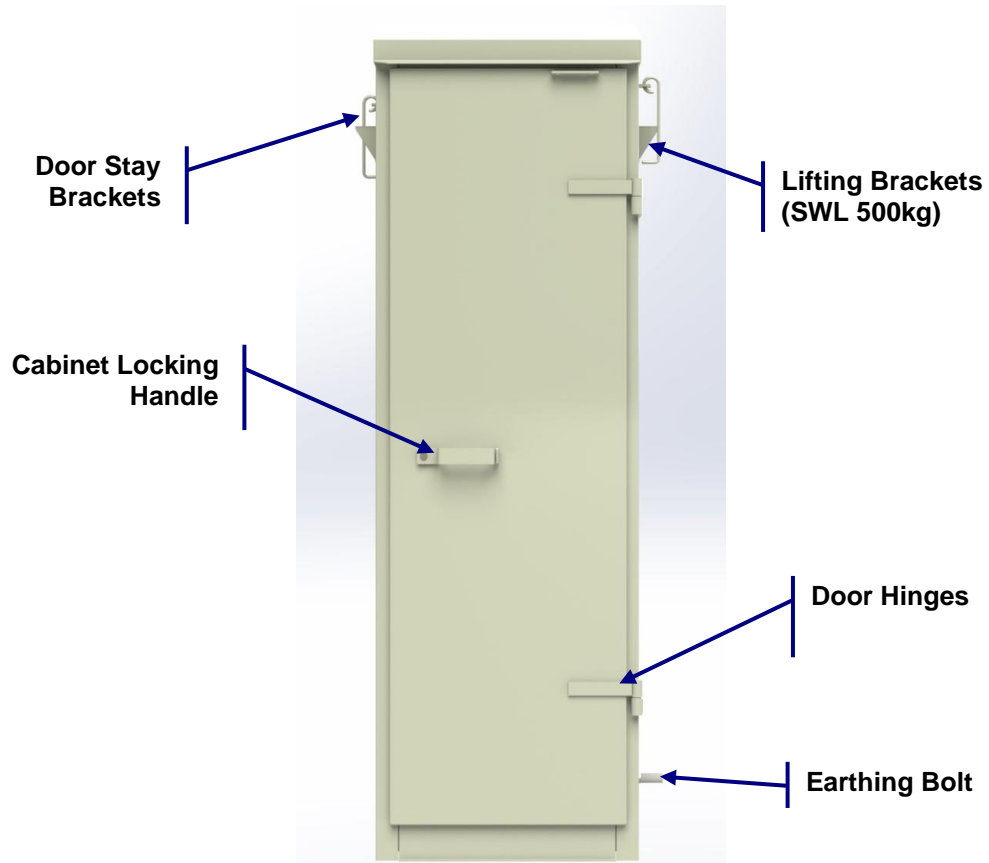


Figure 4: B-Type Location Case (Small) External Arrangement

3.5 B-Type Location Case General Arrangement (Internal)

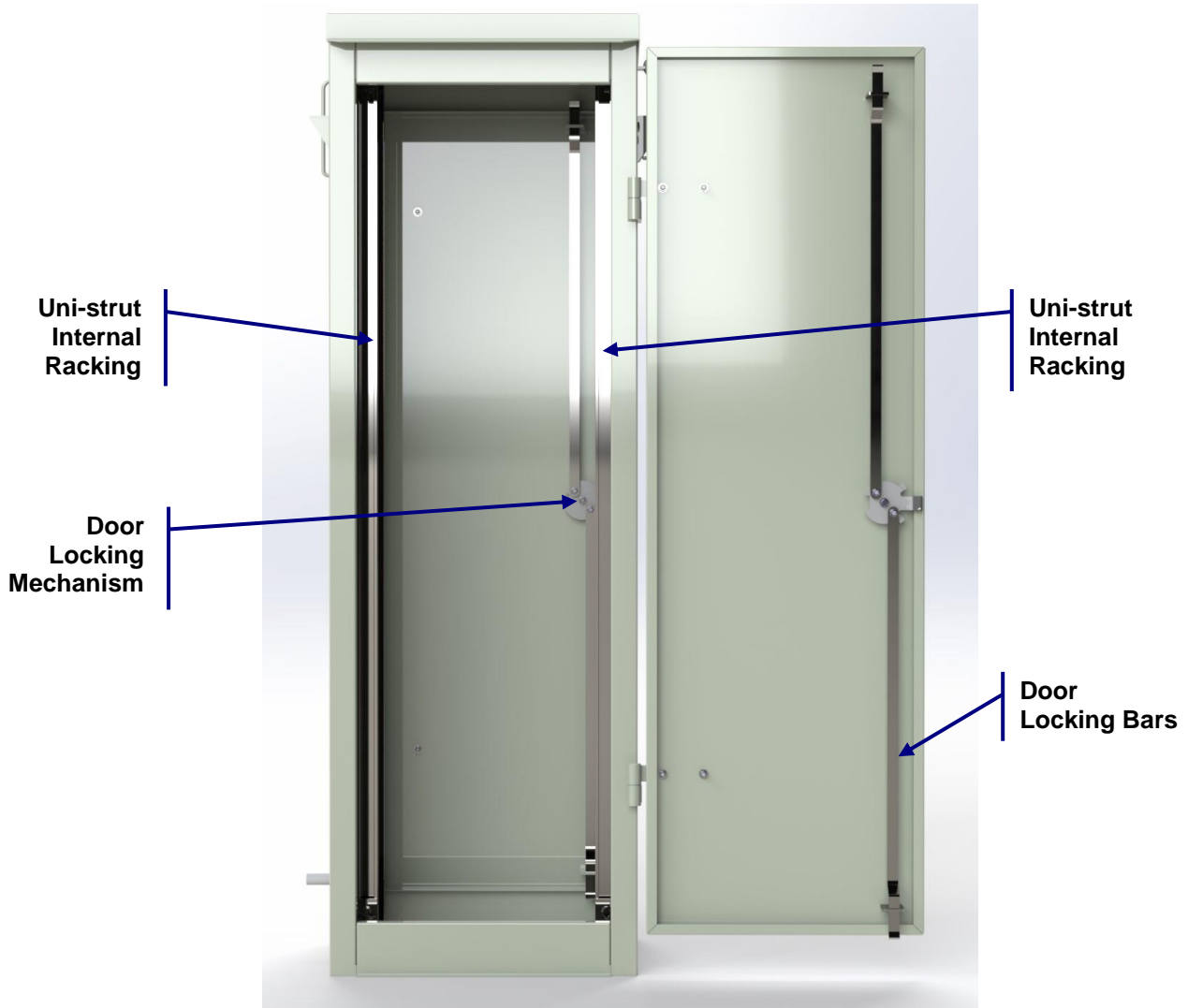


Figure 5: B-Type Location Case (Small) Internal Arrangement

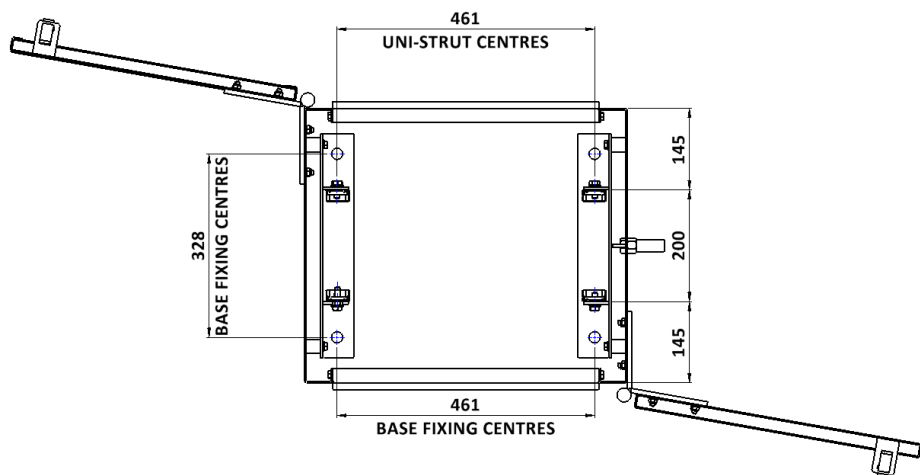


Figure 6: B-Type Location Case (Small) Uni-Strut Positions

4 Location Case Installation

4.1 Installation of A-Type Location Case to Base

The large Location Case is designed to be installed onto a standard 'large' size location case base as shown in the drawing extract below:

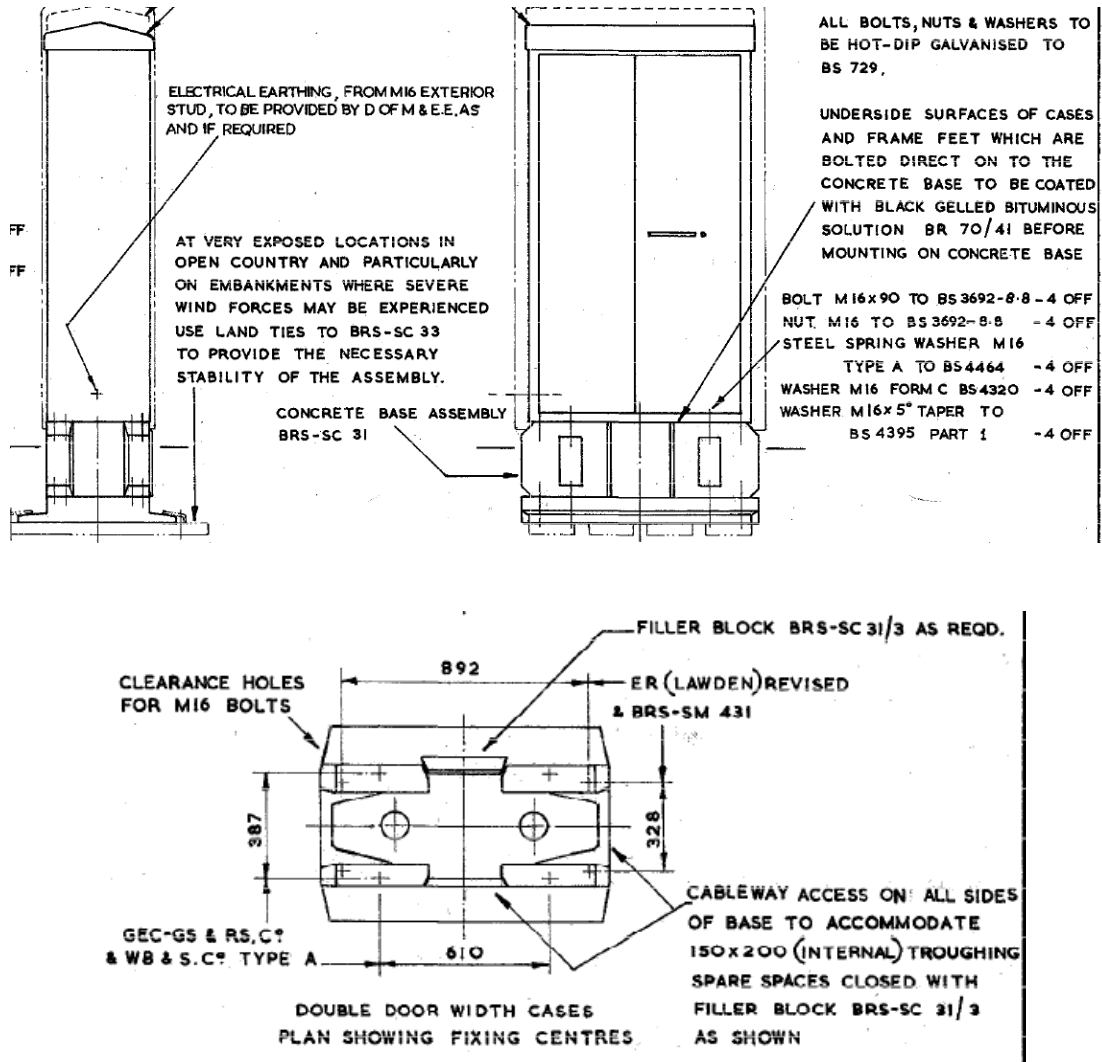


Figure 7: A-Type Location Case fitting to Base Detail

For approved base assembly complete with corner units, filler blocks and fixing kit it is recommended to purchase CAT No. K004/104273.

4.2 Installation of B-Type Location Case to Base

The small location case is designed to be installed onto a standard 'small' size location case base as shown in the drawing extract below:

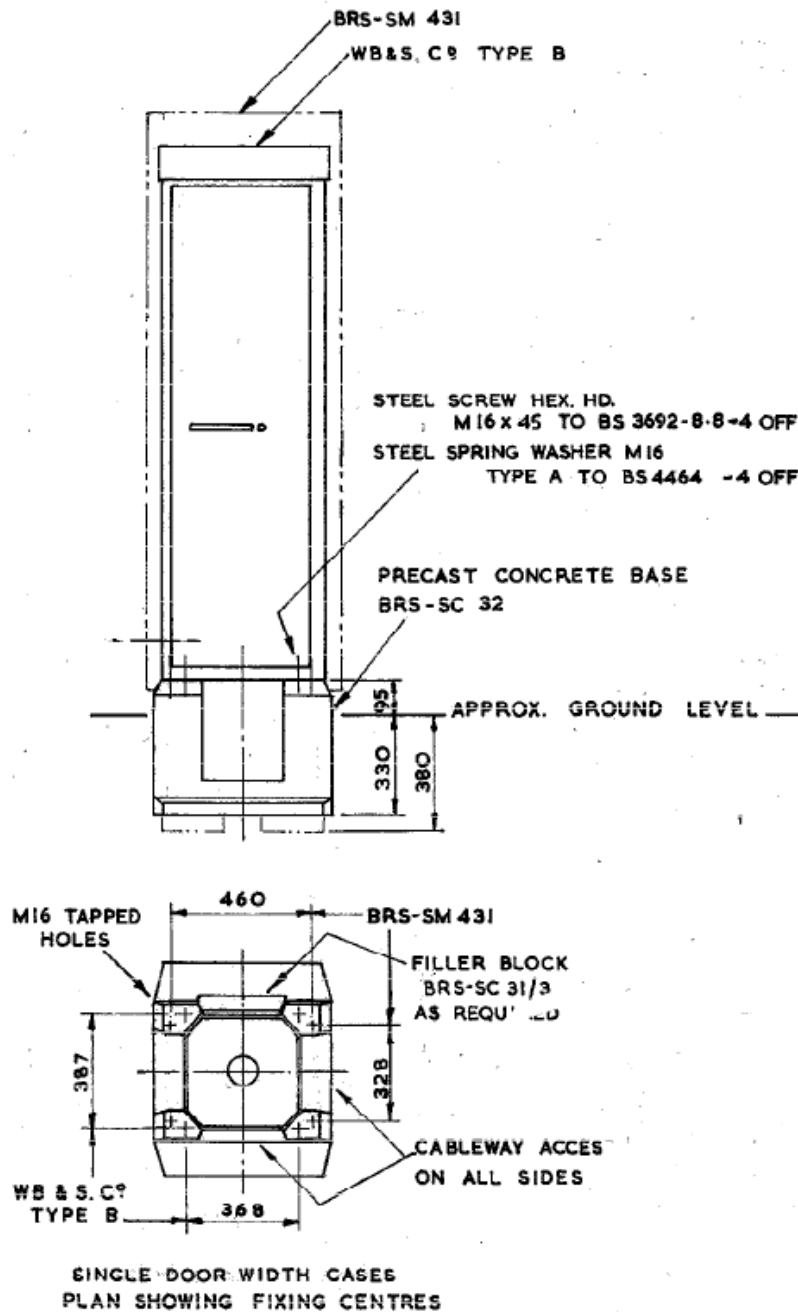


Figure 8: B-Type Case fitting to Base Detail

For approved base assembly complete with corner units, filler blocks and fixing kit it is recommended to purchase CAT No. K004/104274.

5 Maintenance

5.1 Replacement of Components

The internal components can be replaced with new on a like-for-like basis as required.

5.2 Annual Procedure

It is recommended that the following work be carried out yearly:

- General visual inspection as to the condition of the enclosure and removal of any rust or contaminants.
- Ensure all fixing nuts, washers, bolts etc. are present, correct, and tight.
- Apply grease (general purpose) to hinges and door locking mechanism.
- Any areas found to have paint removed to have paint reapplied according to manufacturer's recommendations.

5.3 LEMUR Products

For all maintenance regarding LEMUR products, refer to LEMUR manual (TECH173-LEMUR-AG15)

Careful handling is required when assembling flat pack cases to ensure no damage occurs to LEMUR coating. All damage to LEMUR coating to repaired to instructions in LEMUR manual.

5.4 Guarantee

The function and safety of the equipment is only guaranteed if the warning and safety instructions included in this manual are adhered to.

Henry Williams Limited is not liable for any personal injury or damage to property that occurs as a result of the warning and safety instructions being disregarded.

Henry Williams Limited do does not accept any liability or warranty for damage due to the use of non-approved spare parts and accessories.

6 Location Case Part Numbers

Part Number	Description	PADS Number	Empty Case Weight (KG)
1999.029-A1-300	A CASE 2.5mm 304 Stainless Steel Flat pack	86/9910	179
1999.029-A1-300-L	A CASE 2.5mm 304 stainless Steel Flat pack LEMUR-AG15 coated	86/9910	185
1999.029-A1-400	B CASE 2.5mm 304 Stainless Steel Flat pack	86/9920	127
1999.029-A1-400-L	B CASE 2.5mm 304 Stainless Steel Flat pack LEMUR-AG15 coated	86/9920	130
1988.065-A1-700	A CASE 3mm Mild Steel Plated and Painted Flat pack	86/9950	205
1988.065-A1-700-L	A CASE 3mm Mild Steel Plated and Painted Flat pack LEMUR-AG15 coated	86/9950	211
2005.035-A1-800	A CASE 2mm Stainless Steel Flat pack	86/9911	147
2005.035-A1-800-L	A CASE 2mm Stainless Steel Flat pack LEMUR-AG15 coated	86/9911	153
2005.036-A1-700	B CASE 2mm Stainless Steel Flat pack	86/9921	108
2009.039-A1-700	A case 2mm 304 stainless Steel Enhanced protection flatpack	86/9913	147

1988.066-A1-700	B CASE 3mm Mild Steel Plated and Painted Flatpack	86/9960	145
1988.066-A1-700-L	B CASE 3mm Mild Steel Plated and Painted Flatpack LEMUR-AG15 coated	86/9960	148
2009.039-A1-700-L	A case 2mm 304 stainless Steel Enhanced protection Flatpack LEMUR-AG15 coated	86/9913	155

7 Case Assembly Guide

Appendix A – Large Case (A – Full Width)

Appendix B – Small Case (B – Half Width)