

**Henry Williams Ltd.**  
**Darlington**  
**Co. Durham**  
**DL1 2NJ**  
**(01325) 462 722**  
[www.hwilliams.co.uk](http://www.hwilliams.co.uk)



# **Location Case(s)**

## **Operation & Maintenance Manual**

Document Ref: HWLOCATION-CASE: Version 3.0



## Issue and Revision Record

| <b>Rev</b> | <b>Date</b> | <b>Originator<br/>(Print)<br/>(Signature)</b> | <b>Checker<br/>(Print)<br/>(Signature)</b> | <b>Description</b> |
|------------|-------------|---|--|--------------------|
| 1.0        | 10/02/22    | M Brewster                                    | C Stephenson                               | First Issue        |
| 2.0        | 07/12/22    | S Ward  | C Stephenson                               | Version 2          |
| 3.0        | 04/07/23    | S. Ward                                       | C. Stephenson                              | Version 3          |

# List of Contents

## Chapters and Appendices

|   |    |
|---|----|
| Table of Figures  | 4  |
| 1 Introduction  | 5  |
| 1.1 Competencies and Training Requirements              | 5  |
| 1.2 Glossary of Terms and Abbreviations                 | 5  |
| 1.3 Drawing References – Location Cases                 | 5  |
| 2 Safety  | 6  |
| 2.1 Lifting & Trapping                                  | 6  |
| 2.2 Disposal of Location Case                           | 6  |
| 3 Details of the Location Cases                         | 7  |
| 3.1 General Information                                 | 7  |
| 3.2 A-Type Location Case General Arrangement (External) | 7  |
| 3.3 A-Type Location Case General Arrangement (Internal) | 8  |
| 3.4 B-Type Location Case General Arrangement (External) | 9  |
| 3.5 B-Type Location Case General Arrangement (Internal) | 10 |
| 4 Location Case Installation                            | 11 |
| 4.1 Installation of A-Type Location Case to Base        | 11 |
| 4.2 Installation of B-Type Location Case to Base        | 12 |
| 5 Maintenance   | 13 |
| 5.1 Replacement of Components                           | 13 |
| 5.2 Annual Procedure                                    | 13 |
| 5.3 Lemur Products                                      | 13 |
| 5.4 Guarantee   | 13 |
| 6 Part Numbers  | 14 |

## **Table of Figures**

|   |    |
|---|----|
| Figure 1: A-Type Location Case (Large) External Arrangement | 7  |
| Figure 2: A-Type Location Case (Large) Internal Arrangement | 8  |
| Figure 3: A-Type Location Case (Large) Uni-Strut Positions  | 8  |
| Figure 4: B-Type Location Case (Small) External Arrangement | 9  |
| Figure 5: B-Type Location Case (Small) Internal Arrangement | 10 |
| Figure 6: B-Type Location Case (Small) Uni-Strut Positions  | 10 |
| Figure 7: Large Case fitting to Base Detail                 | 11 |
| Figure 8: Small Case fitting to Base Detail                 | 12 |

# 1 Introduction

This document is designed for use by the maintenance staff (technicians and their supervisors) to maintain the Location Case.

After safety issues are discussed in Chapter 2 this manual follows a logical path from description of the relevant components and routine maintenance.

- **Chapter 2: Safety**  
Gives details of any relevant safety issues to be observed in the use and disposal of the equipment.
- **Chapter 3: Maintenance**  
Details the recommended maintenance checks required to ensure the ongoing correct operation of the system.
- **Chapter 4: Part Numbers**  
Lists the main parts of the system complete with Supplier and Part numbers to aid in the re-ordering of spare parts. – Individual item numbers available on request

## 1.1 Competencies and Training Requirements

Staff with the responsibility for installation and maintenance of the location case must hold the required Network Rail licenses.

## 1.2 Glossary of Terms and Abbreviations

|     |  |
|-----|--|
| HWL | Henry Williams Limited                     |
| Loc | Location/Location Case/Trackside Enclosure |
| mm  | millimetres                                |
| REB | Relocatable Equipment Building             |

## 1.3 Drawing References – Location Cases

The drawing for each Location Case is available on request.

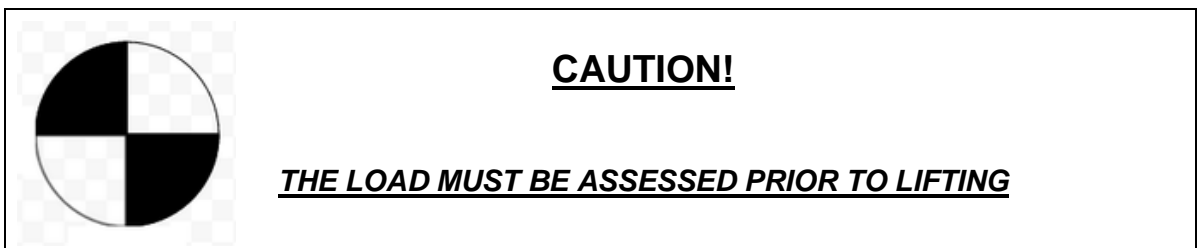
## 2 Safety

### 2.1 Lifting & Trapping

The location case is fitted with external lifting eyes, both of these should be used when lifting, along with suitable lifting equipment. As per the regulations, the load should be assessed prior to any lifting being carried out and lifted uniformly.

Each of the location case enclosures is designed with lifting eyes on each side. These have been independently tested with a load weight of 1,000Kg. According to LOLER regulations @ 200% this gives a SWL of 500Kg.

Empty case weights can be found in Part Numbers table.



The Manual Handling Regulations should be taken into account when lifting heavy items.

All enclosures are fitted with metal hooked door stays which should be used to prevent accidents or damage due to wind or other unforeseen circumstances from closing the doors on unsuspecting personnel.

### 2.2 Disposal of Location Case

Due consideration must be given when disposing of equipment.

Environmental regulations and standards are continually being updated and therefore a risk assessment must be undertaken at the time of equipment disposal.

### 3 Details of the Location Cases

#### 3.1 General Information

The images below show the general layouts of the Location Cases.

#### 3.2 A-Type Location Case General Arrangement (External)

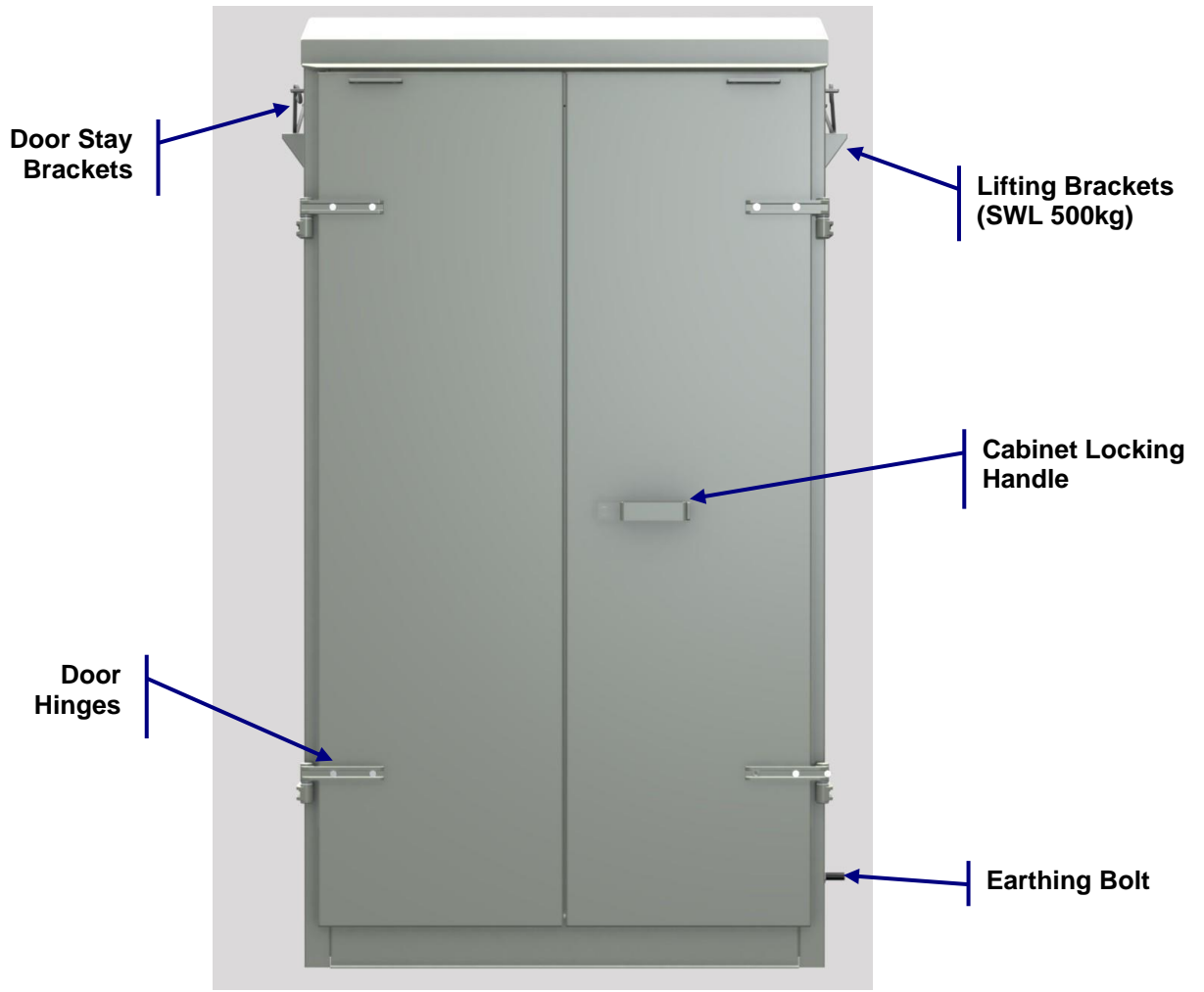


Figure 1: A-Type Location Case (Large) External Arrangement

### 3.3 A-Type Location Case General Arrangement (Internal)

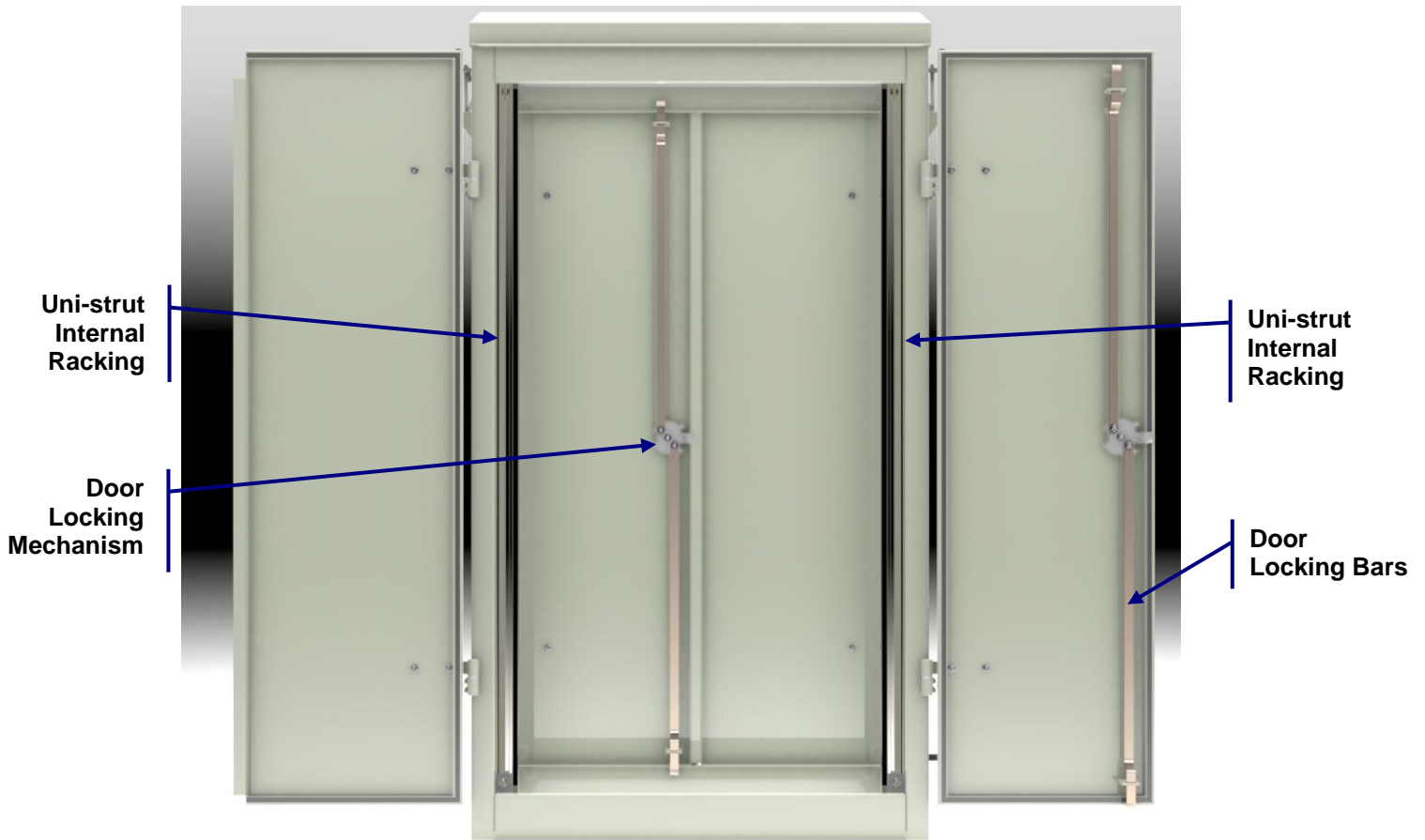


Figure 2: A-Type Location Case (Large) Internal Arrangement

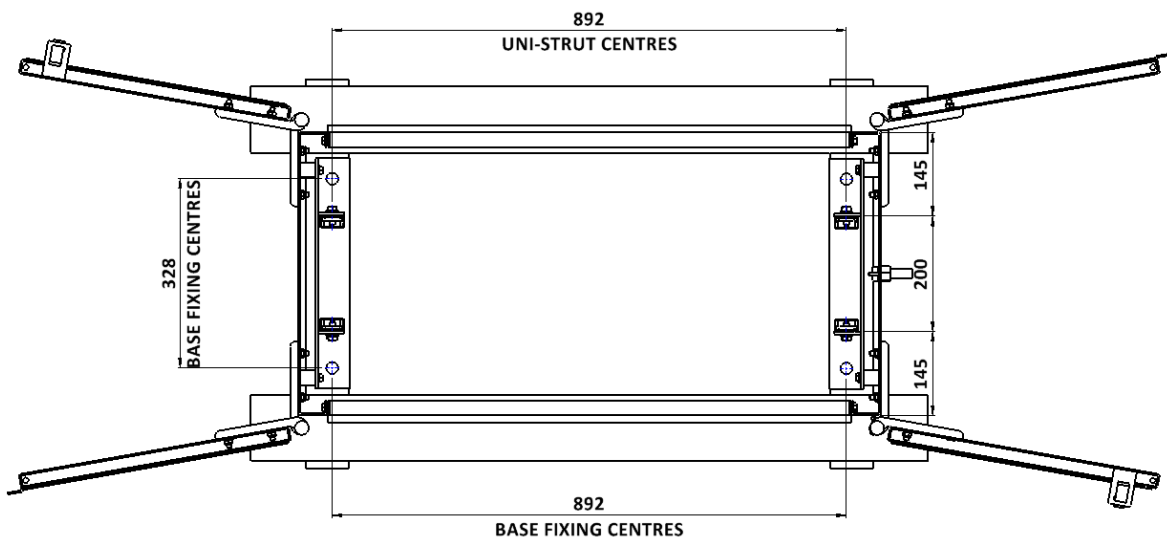
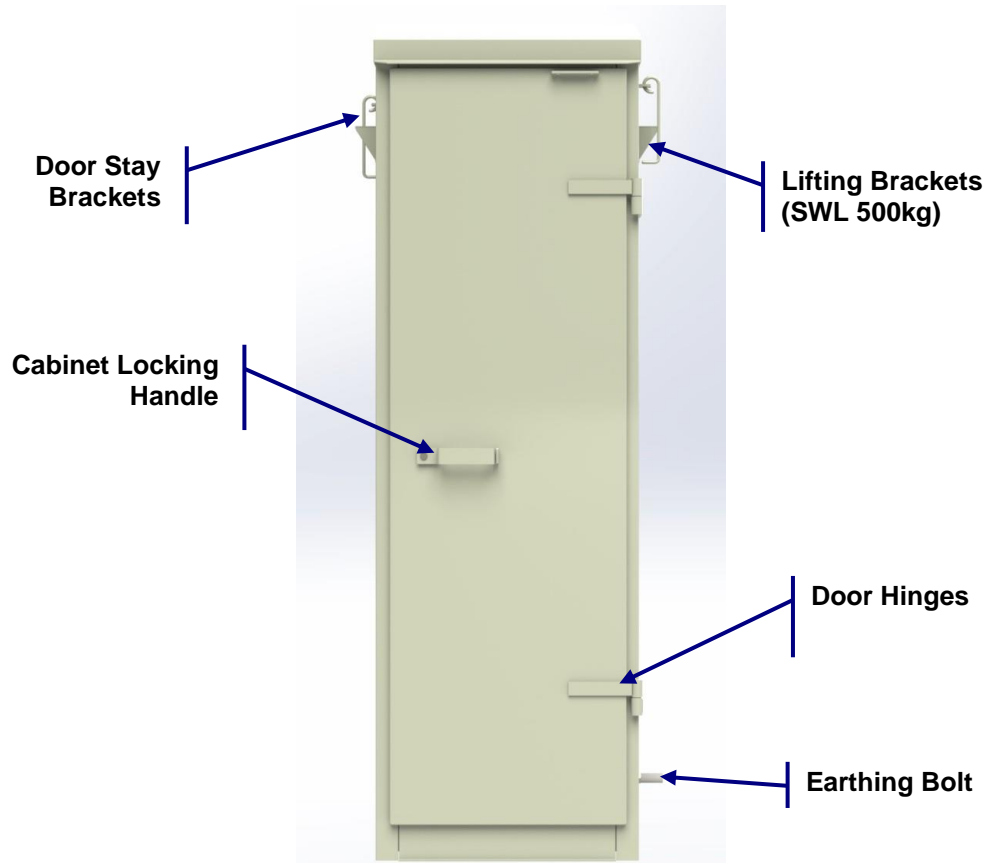


Figure 3: A-Type Location Case (Large) Uni-Strut Positions



### 3.4 B-Type Location Case General Arrangement (External)



**Figure 4: B-Type Location Case (Small) External Arrangement**

### 3.5 B-Type Location Case General Arrangement (Internal)

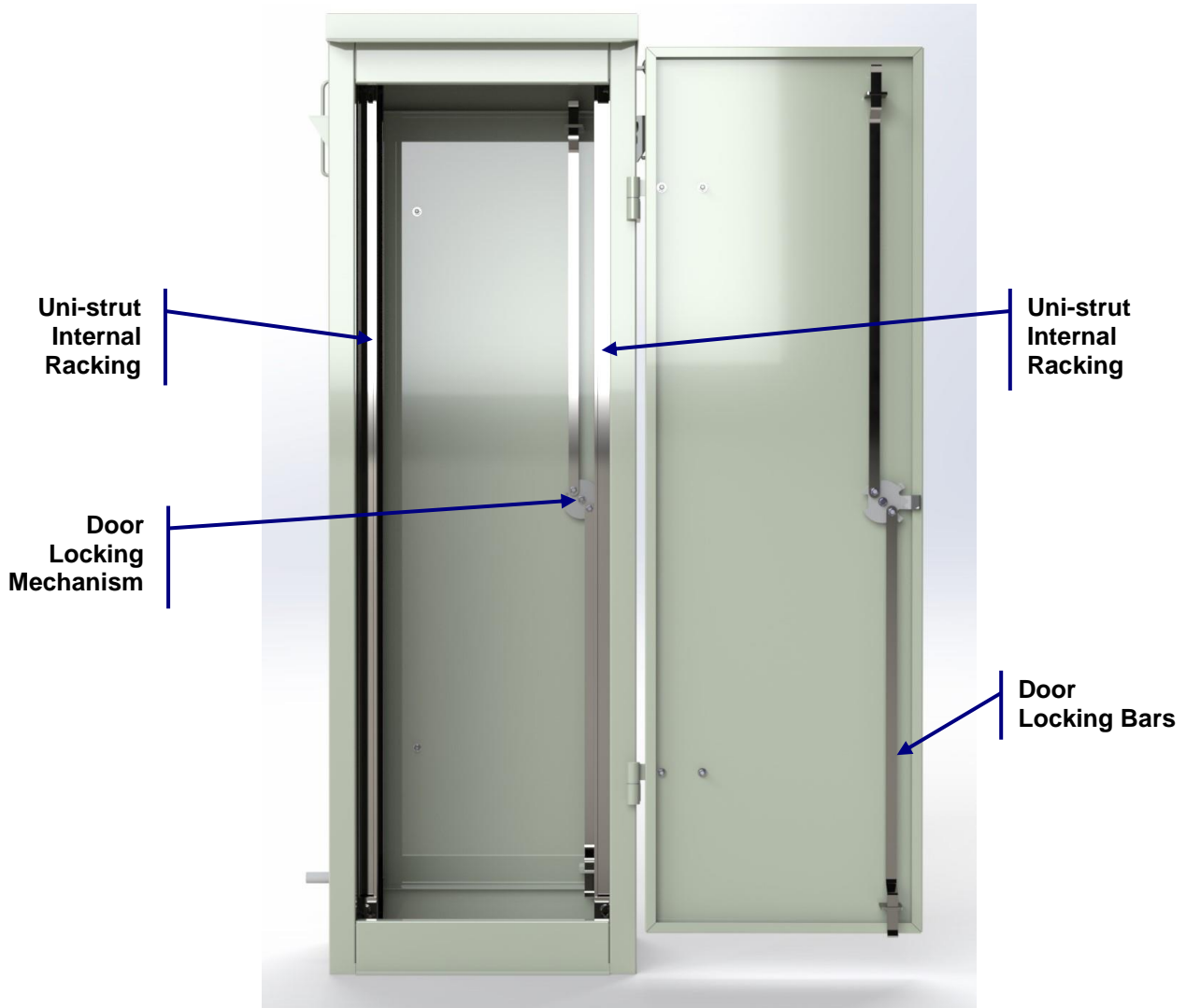


Figure 5: B-Type Location Case (Small) Internal Arrangement

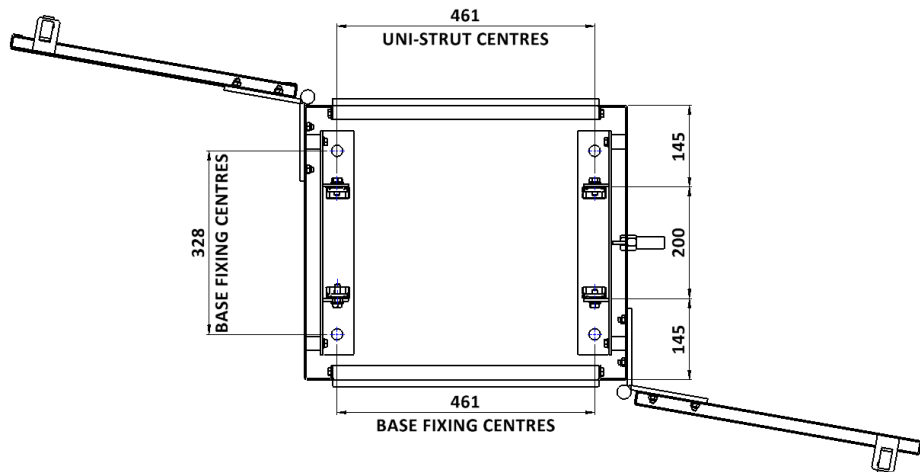
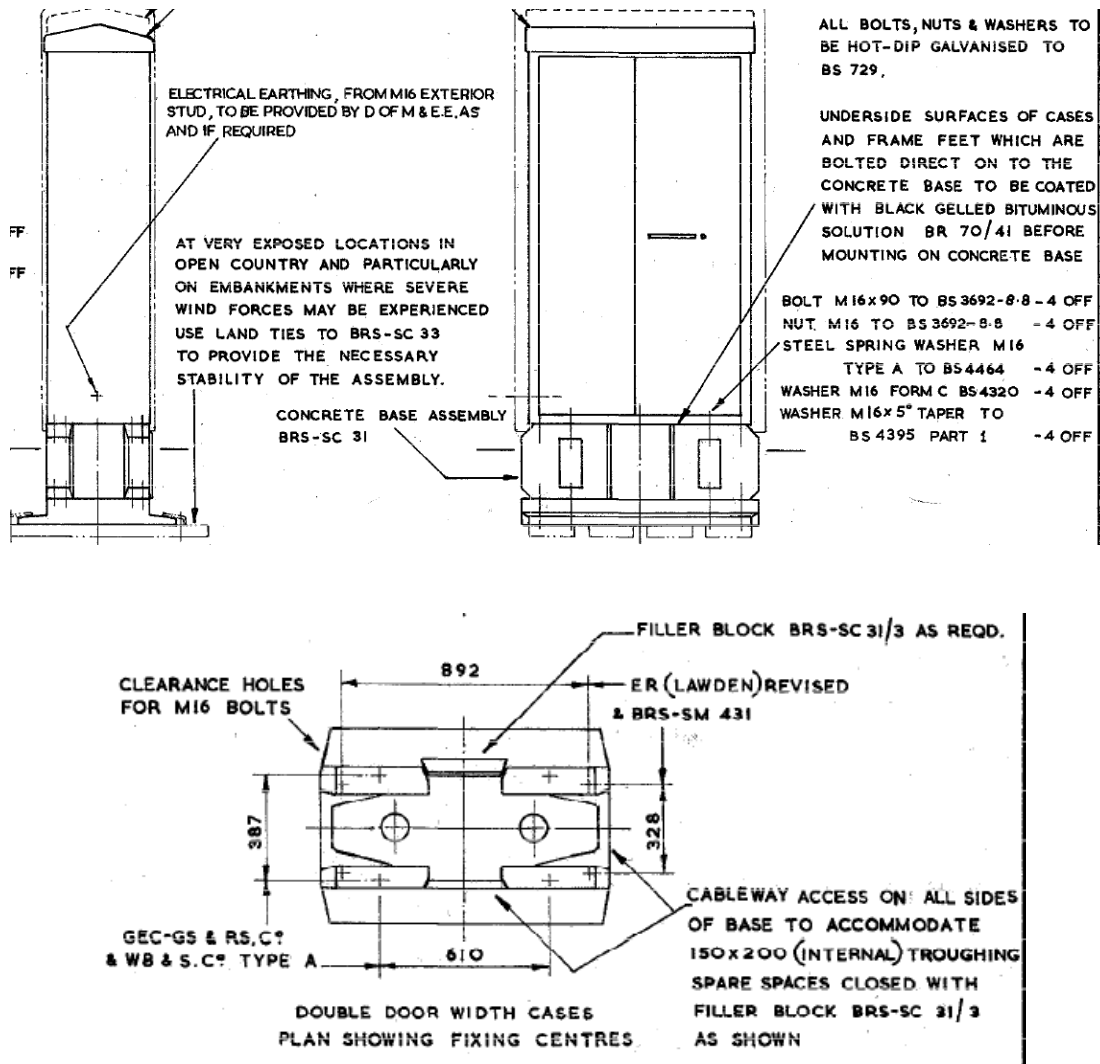


Figure 6: B-Type Location Case (Small) Uni-Strut Positions

## 4 Location Case Installation

### 4.1 Installation of A-Type Location Case to Base

The large Location Case is designed to be installed onto a standard 'large' size location case base as shown in the drawing extract below:



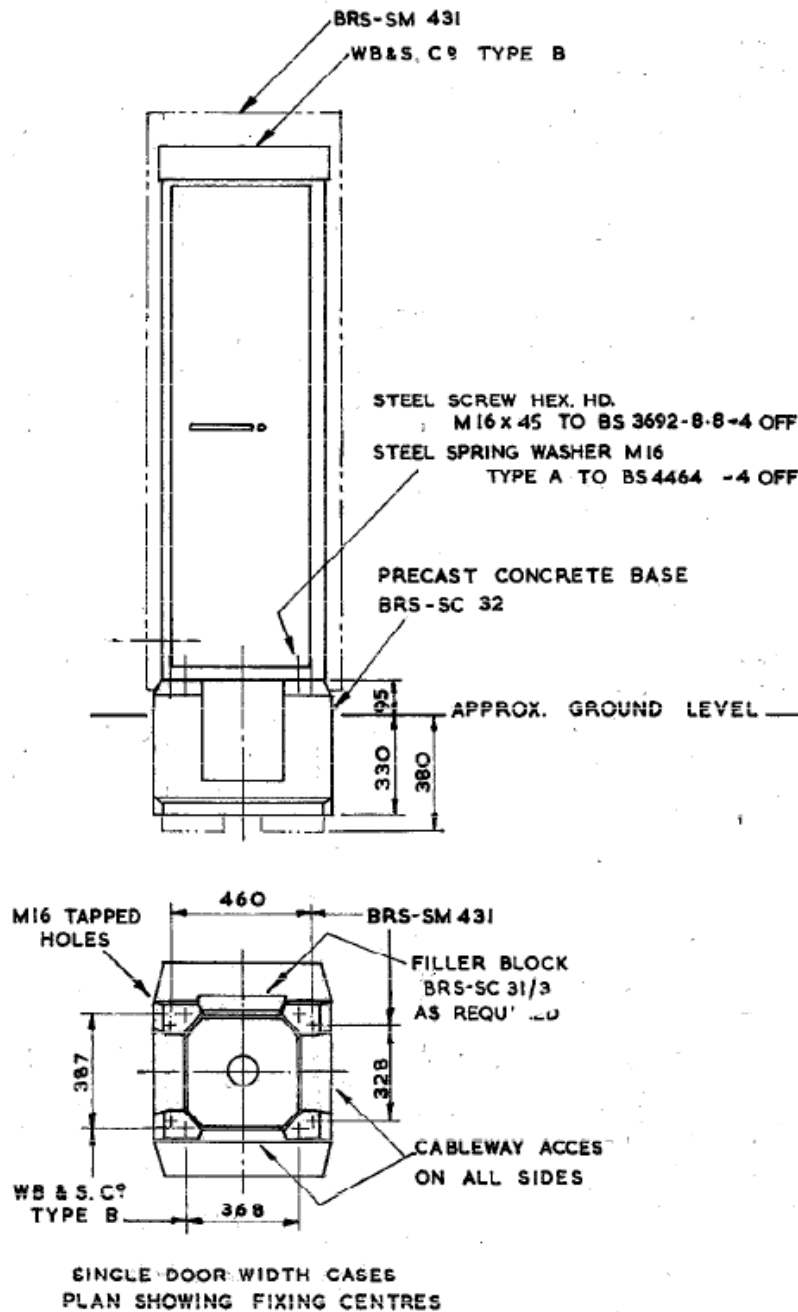
**Figure 7: A-Type Location Case fitting to Base Detail**

For approved base assembly complete with corner units, filler blocks and fixing kit it is recommended to purchase CAT No. K004/104273.

When mounting the location case to the concrete base it is recommended that the fasteners are tightened to a torque of 190 Nm.

## Installation of B-Type Location Case to Base

The small location case is designed to be installed onto a standard 'small' size location case base as shown in the drawing extract below:



**Figure 8: B-Type Case fitting to Base Detail**

For approved base assembly complete with corner units, filler blocks and fixing kit it is recommended to purchase CAT No. K004/104274.

When mounting the location case to the concrete base it is recommended that the fasteners are tightened to a torque of 190 Nm.

## **5 Maintenance**

### **5.1 Replacement of Components**

The internal components can be replaced with new on a like-for-like basis as required.

### **5.2 Annual Procedure**

It is recommended that the following work be carried out yearly:

- General visual inspection as to the condition of the enclosure and removal of any rust or contaminants.
- Ensure all fixing nuts, washers, bolts etc. are present, correct, and tight.
- Apply grease (general purpose) to hinges and door locking mechanism.
- Any areas found to have paint removed to have paint reapplied according to manufacturer's recommendations.

### **5.3 Lemur Products**

For all maintenance regarding Lemur products, refer to Lemur manual (TECH173-LEMUR-AG15)

Careful handling is required when assembling flat pack cases to ensure no damage occurs to Lemur coating. All damage to Lemur coating to repaired to instructions in Lemur manual.

### **5.4 Guarantee**

The function and safety of the equipment is only guaranteed if the warning and safety instructions included in this manual are adhered to.

Henry Williams Limited is not liable for any personal injury to property that occurs as a result of the warning and manual being disregarded.

Henry Williams Limited do does not accept any liability or warranty for damage due to the use of non-approved spare parts and accessories.

## 6 Location Case Part Numbers

| Part Number       | Description   | PADS Number | Empty Case Weight (KG) |
|-------------------|---|-------------|------------------------|
| 1999.029-A1-000   | A TYPE HR 304 SS 2.5mm                                | 86/9910     | 179                    |
| 1999.029-A1-000-L | A TYPE HR 304 SS 2.5mm<br>Lemur-AG15 coated           | 86/9910     | 185                    |
| 2013.052-A1-000   | A TYPE HR 304 SS 2.5mm<br>DELUXE                      | 86/9910     | 182                    |
| 2013.052-A1-100   | A TYPE HR 304 SS 2.5mm<br>NO EARTH BAR                | 86/9910     | 181                    |
| 2005.035-A1-000   | A TYPE 2B 304 SS 2mm                                  | 86/9911     | 147                    |
| 2005.035-A1-000-L | A TYPE 2B 304 SS 2mm<br>Lemur-AG15 coated             | 86/9911     | 153                    |
| 2005.035-A1-700   | A TYPE 2B 304 SS 2mm<br>+ EXTRAS                      | 86/9911     | 150                    |
| 2005.035-A1-700-L | A TYPE 2B 304 SS 2mm<br>+ EXTRAS<br>Lemur-AG15 coated | 86/9911     | 156                    |
| 2017.053-A1-001   | A TYPE 2B 316 SS 2mm<br>+ EXTRAS                      | 86/9911     | 150                    |
| 2007.012-A1-000   | A TYPE 2B 316 SS 2mm                                  | 86/9912     | 147                    |
| 2007.012-A1-000-L | A TYPE 2B 316 SS 2mm<br>Lemur-AG15 coated             | 86/9912     | 153                    |
| 2005.036-A1-100   | B TYPE 2B 316 SS 2mm                                  | 86/9918     | 105                    |
| 2005.036-A1-100-L | B TYPE 2B 316 SS 2mm<br>Lemur-AG15 coated             | 86/9918     | 108                    |
| 1999.029-A1-100   | B TYPE HR 304 SS 2.5mm                                | 86/9920     | 127                    |
| 1999.029-A1-100-L | B TYPE HR 304 SS 2.5mm<br>Lemur-AG15 coated           | 86/9920     | 130                    |
| 2013.053-A1-000   | B TYPE HR 304 SS 2.5mm<br>DELUXE                      | 86/9920     | 130                    |

| <b>Part Number</b>  | <b>Description</b>  | <b>PADS Number</b> | <b>Empty Case Weight (KG)</b> |
|---------------------|---|--------------------|-------------------------------|
| 1988.065-A1-000-1   | A CASE 3mm Mild Steel<br>Plated and Painted   | 86/9950            | 205                           |
| 1988.065-A1-000-1-L | A CASE 3mm Mild Steel<br>Plated and Painted<br>Lemur-AG15 coated  | 86/9950            | 211                           |
| 1988.065-A1-100     | A CASE 3mm Mild Steel<br>Plated and Painted<br>A3 DOC HOLDER + LIGHT BRKT +<br>EARTH BAR                  | 86/9950            | 210                           |
| 1988.065-A1-700     | A CASE 3mm Mild Steel<br>Plated and Painted<br>FLAT PACK  | 86/9950            | 205                           |
| 1988.065-A1-700-L   | A CASE 3mm Mild Steel<br>Plated and Painted<br>FLAT PACK<br>Lemur-AG15 coated                             | 86/9950            | 211                           |
| 1988.065-A1-800     | A CASE 3mm Mild Steel<br>Plated and Painted<br>EARTH BAR + NO LABEL HOLES                                 | 86/9950            | 208                           |
| 1988.065-A1-900     | A CASE 3mm Mild Steel<br>Plated and Painted<br>A3 DOC HOLDER + LIGHT BRKT +<br>EARTH BAR + NO LABEL HOLES | 86/9950            | 210                           |
| 2011.075-A1-000     | A CASE 3mm Mild Steel<br>Plated and Painted<br>DELUXE   | 86/9950            | 205                           |
| 2011.075-A1-500     | A CASE 3mm Mild Steel<br>Plated and Painted<br>DELUXE + 54 WAY BUSBAR                                     | 86/9950            | 210                           |
| 2011.075-A1-502     | A CASE 3mm Mild Steel<br>Plated and Painted<br>DELUXE + 2 DOC HOLDERS + 54 WAY<br>BUSBAR                  | 86/9950            | 211                           |

| <b>Part Number</b>  | <b>Description</b>  | <b>PADS Number</b> | <b>Empty Case Weight (KG)</b> |
|---------------------|---|--------------------|-------------------------------|
| 1988.066-A1-000-1   | B CASE 3mm Mild Steel<br>Plated and Painted                                   | 86/9960            | 145                           |
| 1988.066-A1-000-1-L | B CASE 3mm Mild Steel<br>Plated and Painted<br>Lemur- AG15 coated             | 86/9960            | 148                           |
| 1988.066-A1-700     | B CASE 3mm Mild Steel<br>Plated and Painted<br>FLATPACK                       | 86/9960            | 145                           |
| 1988.066-A1-700-L   | B CASE 3mm Mild Steel<br>Plated and Painted<br>FLATPACK<br>Lemur- AG15 coated | 86/9960            | 148                           |
| 2011.076-A1-500     | B CASE 3mm Mild Steel<br>Plated and Painted<br>DELUXE                         | 86/9960            | 146                           |
| 2011.076-A1-502     | B CASE 3mm Mild Steel<br>Plated and Painted<br>DELUXE + 2 DOC HOLDERS         | 86/9960            | 147                           |