

**Henry Williams Ltd.**  
Darlington  
Co. Durham  
DL1 2NJ  
(01325) 462 722  
www.hwilliams.co.uk



# **FSP03 Location Case(s)**

## **Operation & Maintenance Manual**

Document Ref: HWFSP03-CASE: Version 2.0



## Issue and Revision Record

<b>Rev</b>	<b>Date</b>	<b>Originator (Print) (Signature)</b>	<b>Checker (Print) (Signature)</b>	<b>Description</b>
1.0	07/03/22	M Brewster	C Stephenson	First Issue
2.0	04/07/23	S Ward	C Stephenson	Version 02

# List of Contents

## Chapters and Appendices

Table of Figures	4
1 Introduction	5
1.1 Competencies and Training Requirements	5
1.2 Glossary of Terms and Abbreviations	5
1.3 Drawing References – FSP03 Cases	5
2 Safety	6
2.1 Lifting & Trapping	6
2.2 Disposal of FSP03 Case	6
3 Details of the FSP03 Cases	7
3.1 General Information	7
3.2 FSP03 Location Case General Arrangement (External)	7
3.3 FSP03 Location Case General Arrangement (Internal)	8
4 Location Case Installation	9
4.1 Installation of FSP03 Location Case to Base	9
5 Maintenance	10
5.1 Replacement of Components	10
5.2 Annual Procedure	10
5.3 Lemur Products	10
5.4 Guarantee	10
6 Part Numbers	11

## **Table of Figures**

Figure 1: FSP03 Location Case External Arrangement	7
Figure 2: FSP03 Location Case Internal Arrangement	8
Figure 3: FSP03 Location Case Uni-Strut Positions	8
Figure 4: FSP03 Location Case fitting to Base Detail	9

## 1 Introduction

This document is designed for use by the maintenance staff (technicians and their supervisors) to maintain the FSP03 Location Case.

After safety issues are discussed in Chapter 2 this manual follows a logical path from description of the relevant components and routine maintenance.

- **Chapter 2: Safety**  
Gives details of any relevant safety issues to be observed in the use and disposal of the equipment.
- **Chapter 3: Maintenance**  
Details the recommended maintenance checks required to ensure the ongoing correct operation of the system.
- **Chapter 4: Part Numbers**  
Lists the main parts of the system complete with Supplier and Part numbers to aid in the re-ordering of spare parts. – Individual item numbers available on request

### 1.1 Competencies and Training Requirements

Staff with the responsibility for installation and maintenance of the FSP03 Location case must hold the required Network Rail licenses.

### 1.2 Glossary of Terms and Abbreviations

HWL	Henry Williams Limited
Loc	Location/Location Case/Trackside Enclosure
mm	millimetres
REB	Relocatable Equipment Building

### 1.3 Drawing References – FSP03 Location Cases

The drawing for each FSP03 Location Case is available on request.

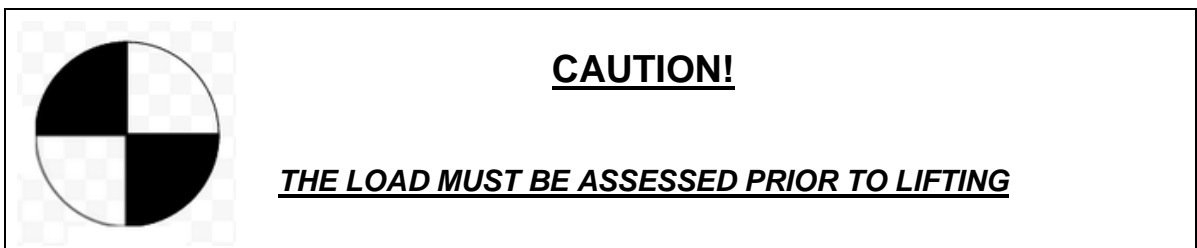
## 2 Safety

### 2.1 Lifting & Trapping

The FSP03 location case is fitted with external lifting eyes, both of these should be used when lifting, along with suitable lifting equipment. As per the regulations, the load should be assessed prior to any lifting being carried out and lifted uniformly.

Each of the FSP03 location case enclosures are designed with lifting eyes on each side. These have been independently tested with a load weight of 1,000Kg. According to LOLER regulations @ 200% this gives a SWL of 500Kg.

Empty case weights can be found in Part Numbers table



The Manual Handling Regulations should be taken into account when lifting heavy items.

All enclosures are fitted with metal hooked door stays which should be used to prevent accidents or damage due to wind or other unforeseen circumstances from closing the doors on unsuspecting personnel.

### 2.2 Disposal of FSP03 Location Case

Due consideration must be given when disposing of equipment.

Environmental regulations and standards are continually being updated and therefore a risk assessment must be undertaken at the time of equipment disposal.

### 3 Details of the FSP03 Location Cases

#### 3.1 General Information

The images below show the general layouts of the FSP03 Location Cases.

#### 3.2 FSP03 Location Case General Arrangement (External)

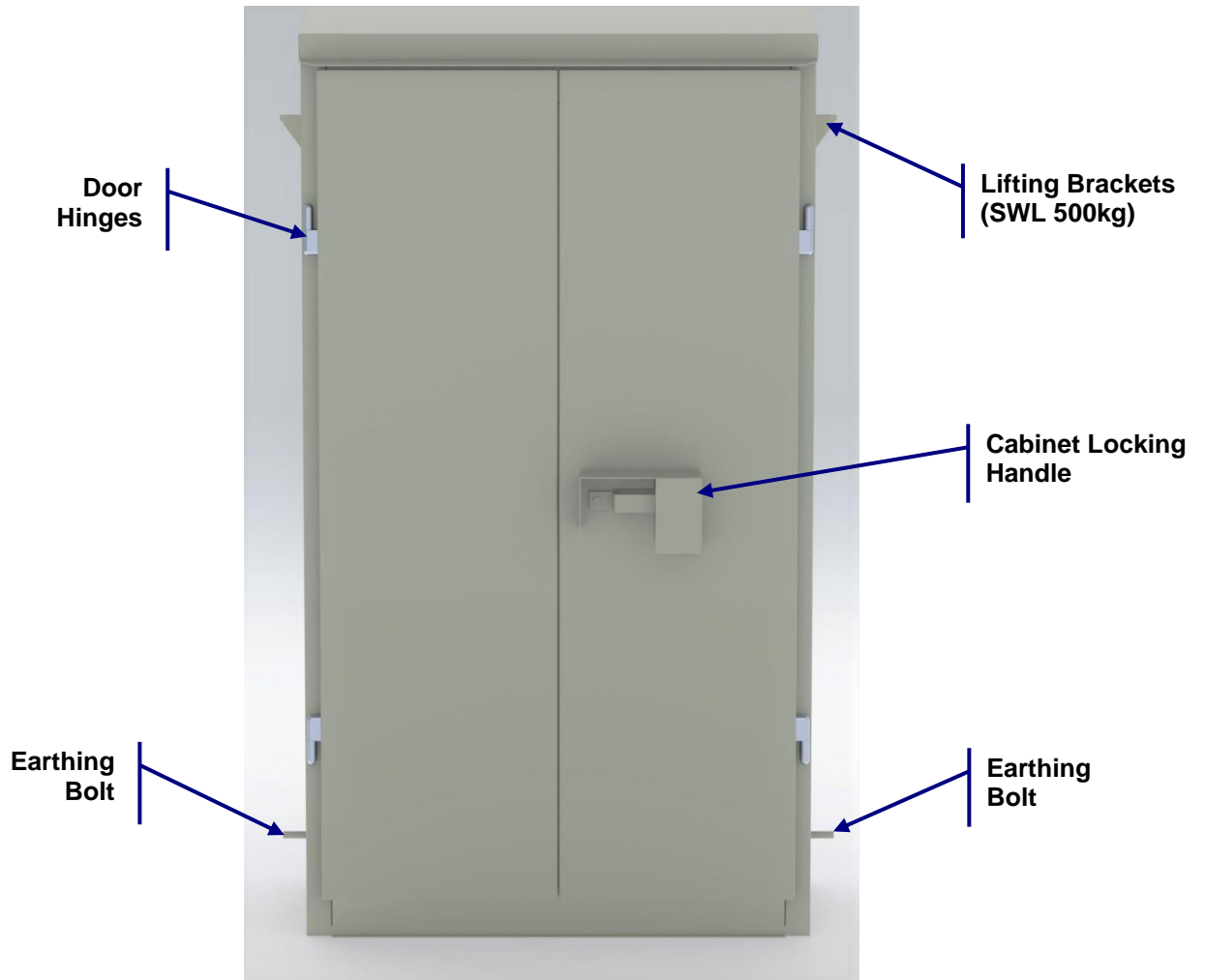


Figure 1: FSP03 Location Case External Arrangement

### 3.3 FSP03 Location Case General Arrangement (Internal)



Figure 2: FSP03 Location Case Internal Arrangement

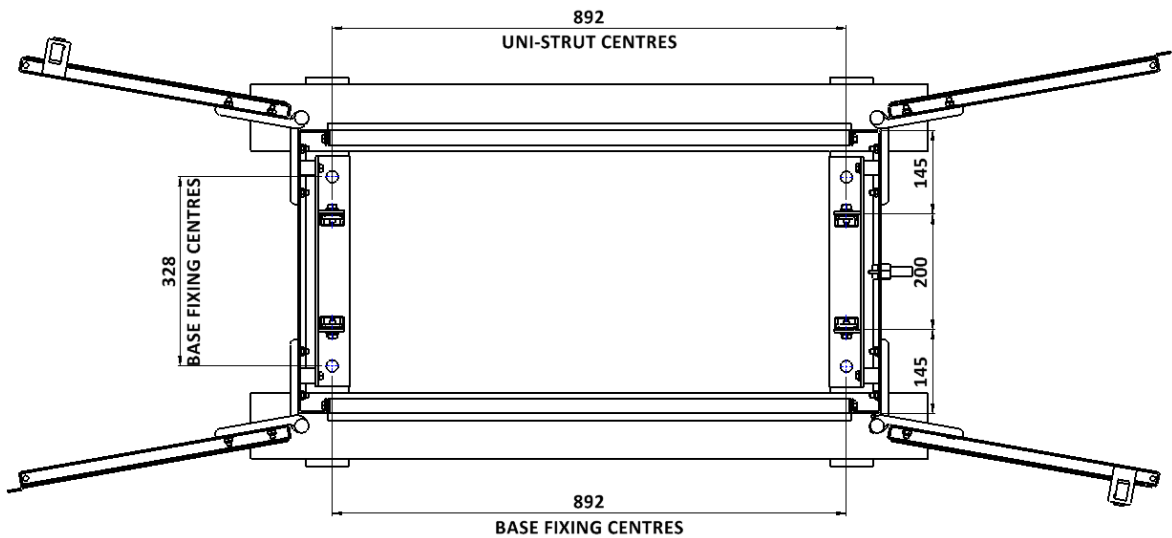


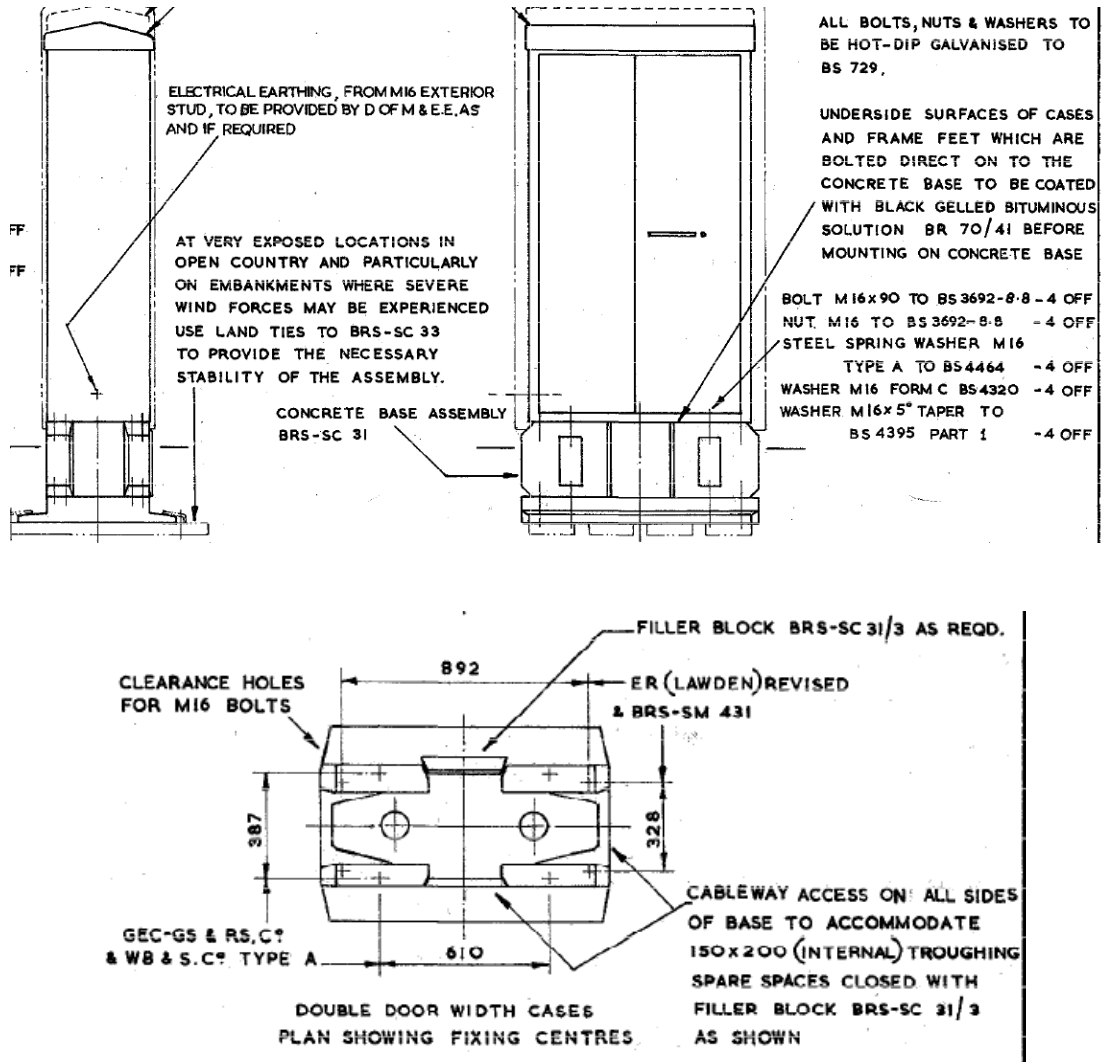
Figure 3: FSP03 Location Case Uni-Strut Positions



## 4 FSP03 Location Case Installation

### 4.1 Installation of FSP03 Location Case to Base

The FSP03 Location Case is designed to be installed onto a standard 'large' size location case base as shown in the drawing extract below:



**Figure 4: FSP03 Location Case fitting to Base Detail**

For approved base assembly complete with corner units, filler blocks and fixing kit it is recommended to purchase CAT No. K004/104273.

When mounting the location case to the concrete base it is recommended that the fasteners are tightened to a torque of 190 Nm.

## **5 Maintenance**

### **5.1 Replacement of Components**

The internal components can be replaced with new on a like-for-like basis as required.

### **5.2 Annual Procedure**

It is recommended that the following work be carried out yearly:

- General visual inspection as to the condition of the enclosure and removal of any rust or contaminants.
- Ensure all fixing nuts, washers, bolts etc. are present, correct, and tight.
- Apply grease (general purpose) to hinges and door locking mechanism
- Any areas found to have paint removed to have paint reapplied according to manufacturer's recommendations

### **5.3 Lemur Products**

For all maintenance regarding Lemur products, refer to Lemur manual (TECH173-LEMUR-AG15)

### **5.4 Guarantee**

The function and safety of the equipment is only guaranteed if the warning and safety instructions included in this manual are adhered to.

Henry Williams Limited is not liable for any personal injury to property that occurs as a result of the warning and manual being disregarded.

Henry Williams Limited do not accept any liability or warranty for damage due to the use of non-approved spare parts and accessories.

## 6 FSP03 Location Case Part Numbers

<b>Part Number</b>	<b>Description</b>	<b>PADS Number</b>	<b>Empty Case Weight (KG)</b>
2013.102-A1-000	A TYPE PLUS FSP03 2.0mm 3CR12		160
2013.102-A1-000-L	A TYPE PLUS FSP03 2.0mm 3CR12 Lemur-AG15 coated	086/010482	167